

Printable Party Kit

Dinosaur Party

Dinosaur lovers and budding paleontologists will love this dino-themed party kit infused with fun, fascinating facts from our friends at Mental Floss. Celebrate your prehistoric prowess (did you know that Thomas Jefferson was an avid fossil collector who made contributions to the field of paleontology?) and make sure your guests have a roaring good time.

Each part of the kit provides simple yet detailed directions for crafting decorations, games, and special details that will add the finishing touches and bring a bit of prehistoric fun to your party.



Look for this symbol indicating a trivial fact from our friends at [mental_floss](#), the ultimate source for fun and fascinating trivia. Their myth-busting, endearingly geeky, and addictively entertaining magazine, website, and videos help bring the worlds of science, history, and culture to life.

IN YOUR KIT:

- cake and cupcake toppers
- straw toppers
- placemats
- bunting
- party hats
- photobooth props
- games
- treat bags
- guestbook

WHAT YOU MIGHT NEED TO SUPPLY:

- scissors
- quick-drying glue
- tape
- wooden skewers
- toothpicks
- straws
- coloring supplies
- ink pad
- utility knife
- paper
- pens
- pencils
- string
- twine
- hole punch

SOME TIPS FOR PRINTING:

- Print these templates on your own printer or save them to a flash drive and take them to a printing center.
- Use a cover paper weight. We suggest using 110lb. paper. If you are printing on your own printer, check the limits first.
- Not all printers have the same margin settings. Click the “scale to fit” option in your printer settings to fit all artwork on the page within your printer’s particular margins.
- Change your printer settings to print as many copies of each page or kit component you would like. By indicating the specific page(s) you would like to print you can avoid printing multiple copies of this page and the instruction pages.

* Children should be monitored when helping with assembly *

* This file is for personal, non-commercial use only. *

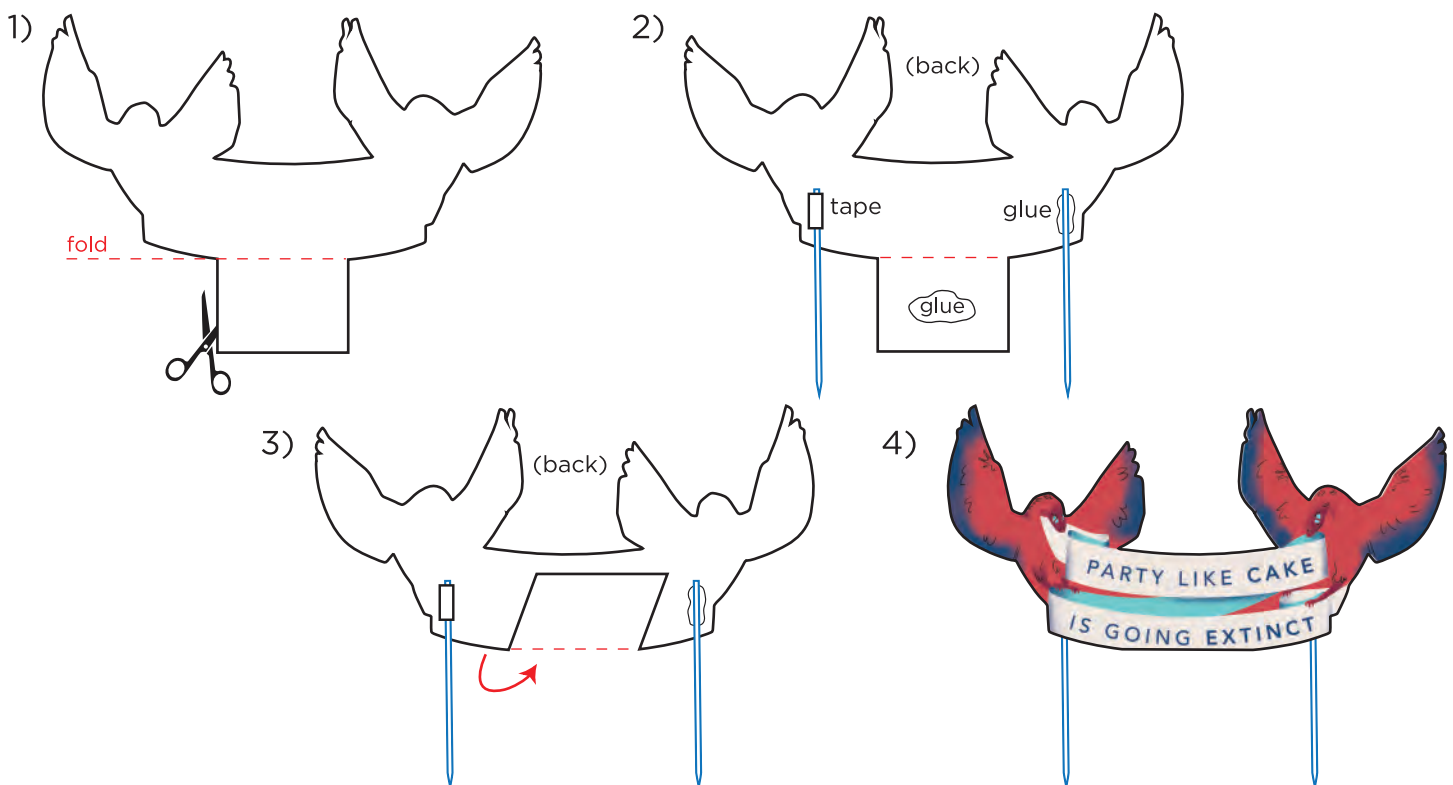
You may not forward, share, sell or distribute the file. UncommonGoods reserves all rights.

WHAT YOU NEED:

- scissors
- 2 large wooden skewers (10 inches or longer)
- 8 toothpicks
- non-toxic glue or tape (a glue stick or quick-drying glue is recommended)

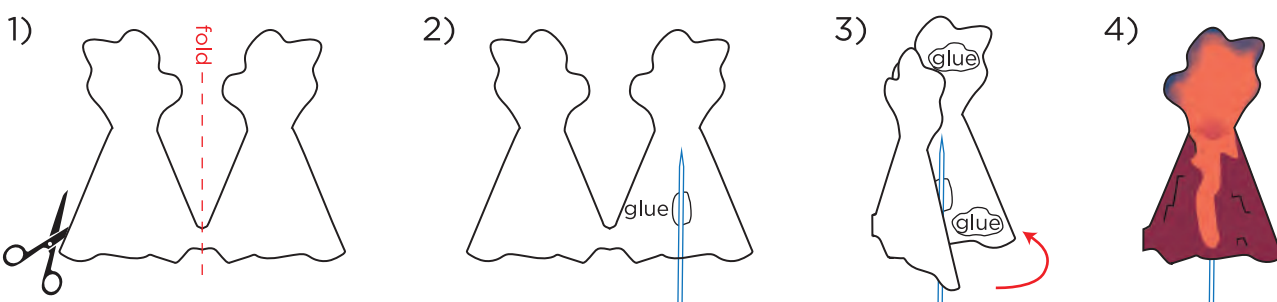
HOW TO ASSEMBLE CAKE TOPPER:

Cut out the cake topper along the black line. Fold the fact tab on the **dotted line**. To attach the **skewers**, glue or tape them to the back of the topper (see image 2). Glue the back of the fact tab and attach it to the back of the cake topper (see image 3).



HOW TO ASSEMBLE CUPCAKE TOPPERS:

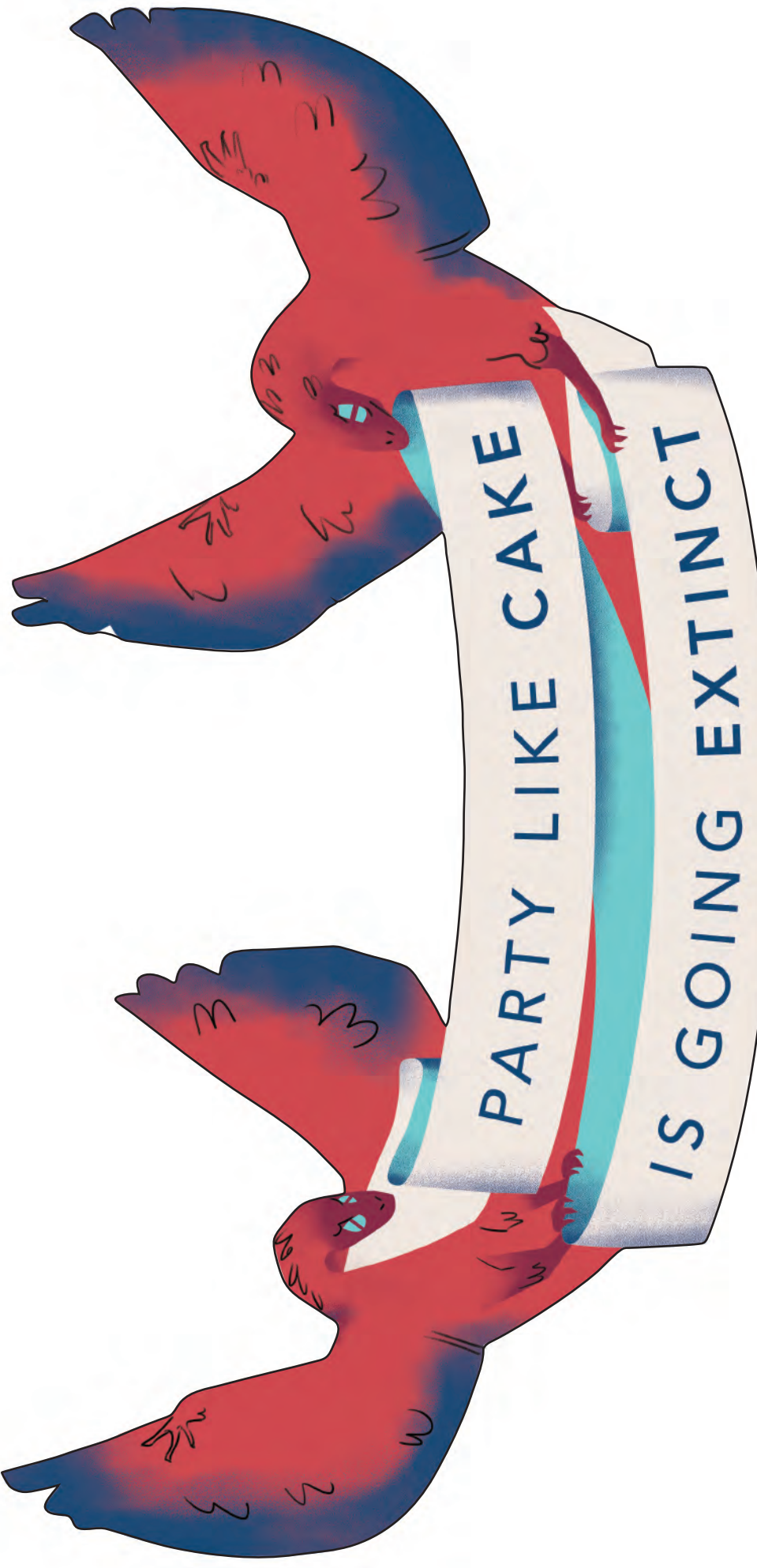
Cut out the cupcake toppers. Glue or tape the **toothpick** in the middle of the right side of the volcano so that the bottom of the volcano reaches about halfway down the **toothpick** (see image 2). Add glue or double-sided tape to each side of the cupcake topper then fold the sides together along the fold line to create the volcano (see image 3).

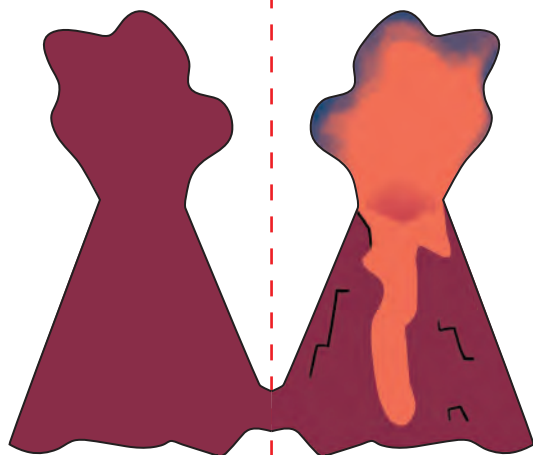
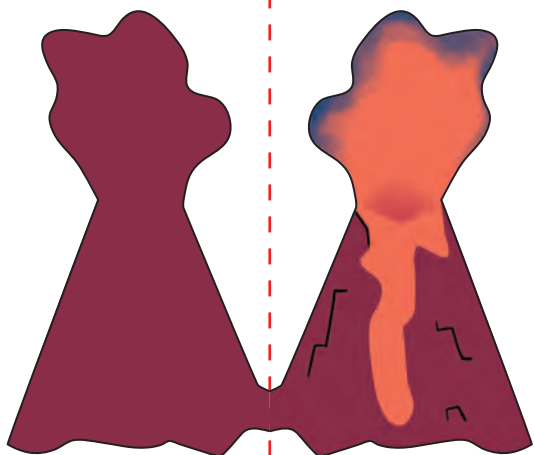
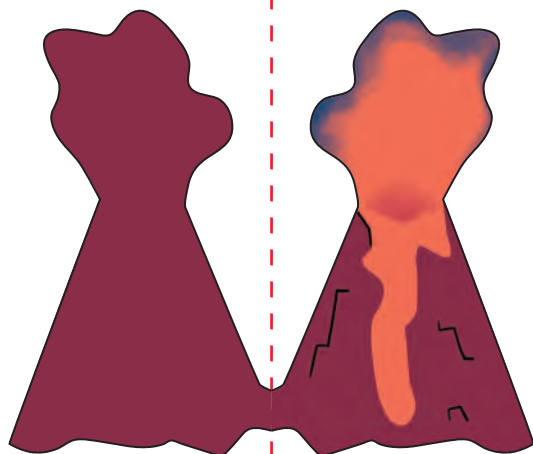
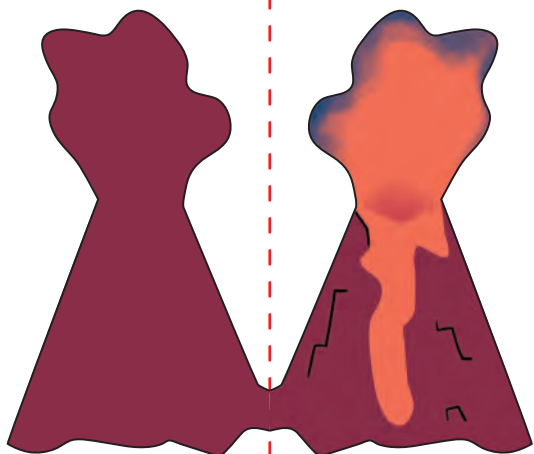
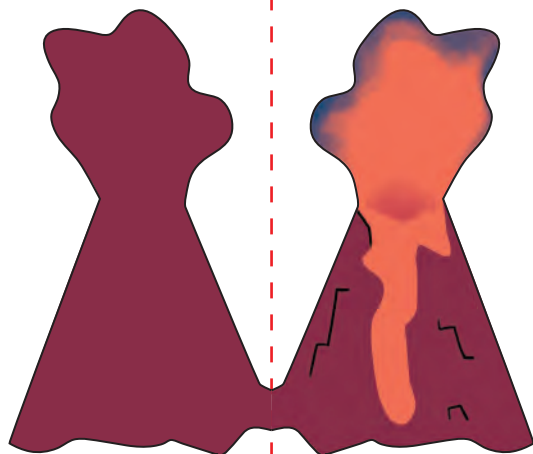
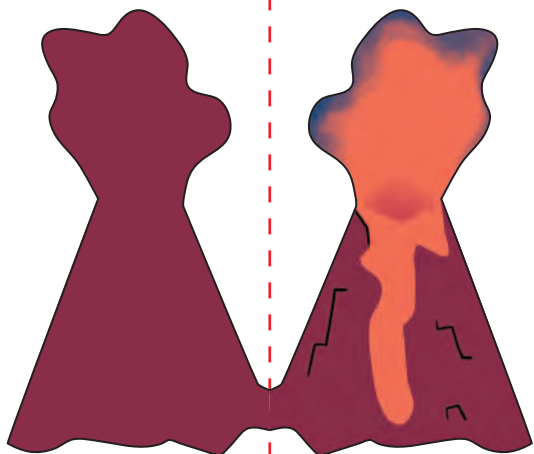
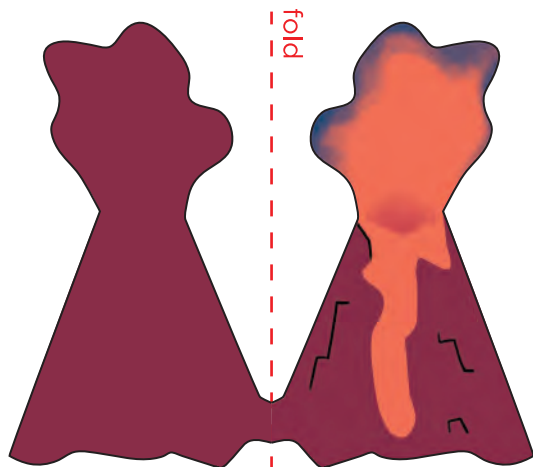
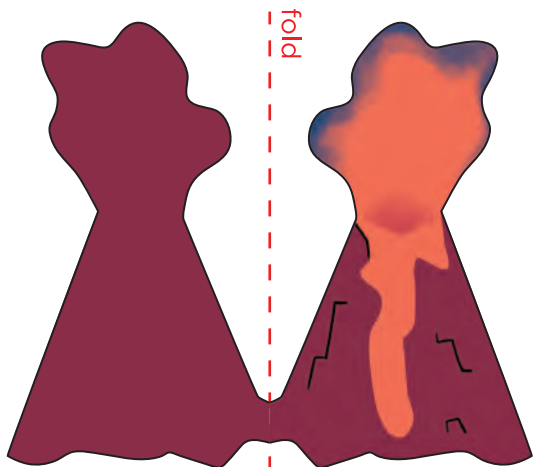


Birds of a Feather

Did you know that dinosaurs like the Archaeopteryx were very similar to modern birds and may have rocked a feathery coat? Paleontologists have found dozens of well-preserved dinos surrounded by feathers, possibly to serve as an insulator.

fold





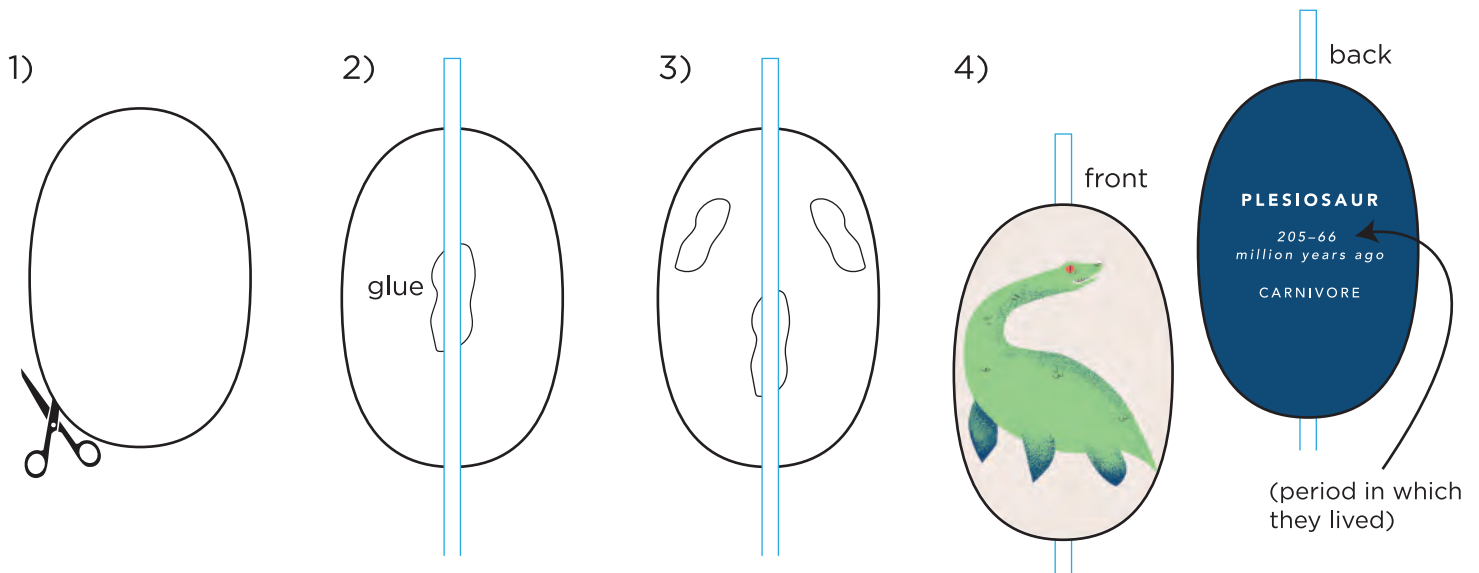
Carnivores vs. Herbivores Straw Toppers

WHAT YOU NEED:

- scissors
- 8 straws
- non-toxic glue or tape
(a glue stick or quick-drying glue is recommended)

HOW TO ASSEMBLE STRAW TOPPERS:

Cut out the the straw topper components. Glue a **straw** onto the blank side of the back piece (see image 2). Make sure to leave at least an inch of the **straw** sticking out. Apply glue or double-sided tape to each side of the straw topper (see image 3). Match up the corresponding front piece to the back to secure all elements together. Repeat this for each straw.



front



back

PLESIOSAUR

205-66
million years ago

CARNIVORE

front



back

OVIRAPTOR

75
million years ago

CARNIVORE

front



back

TYRANNOSAUR

80-66
million years ago

CARNIVORE

front



back

PTEROSAUR

228-66
million years ago

CARNIVORE

front



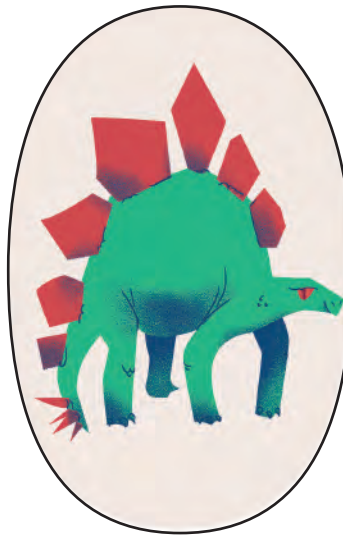
back

ANKYLOSAUR

167–66
million years ago

HERBIVORE

front



back

STEGOSAUR

170–110
million years ago

HERBIVORE

front



back

DIPLODOCID

170–136.4
million years ago

HERBIVORE

front



back

HADROSAUR

83.5–66
million years ago

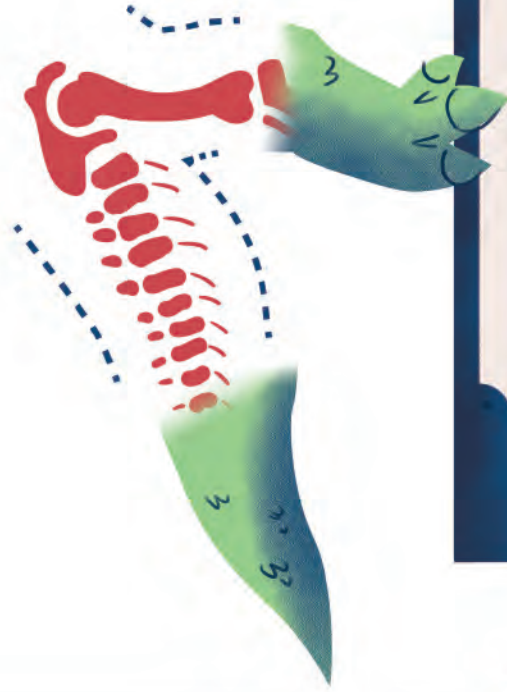
HERBIVORE

WHAT YOU NEED: - coloring supplies

HOW TO USE PLACEMATS:

Party guests can “uncover” their own dinosaur by drawing in the missing dinosaur skeleton for their exhibit. Draw short arms, horns, a long neck - you can make your dinosaur look however you want!

DRAW YOUR DINO



💡 Dragons, Unicorns, and Griffins

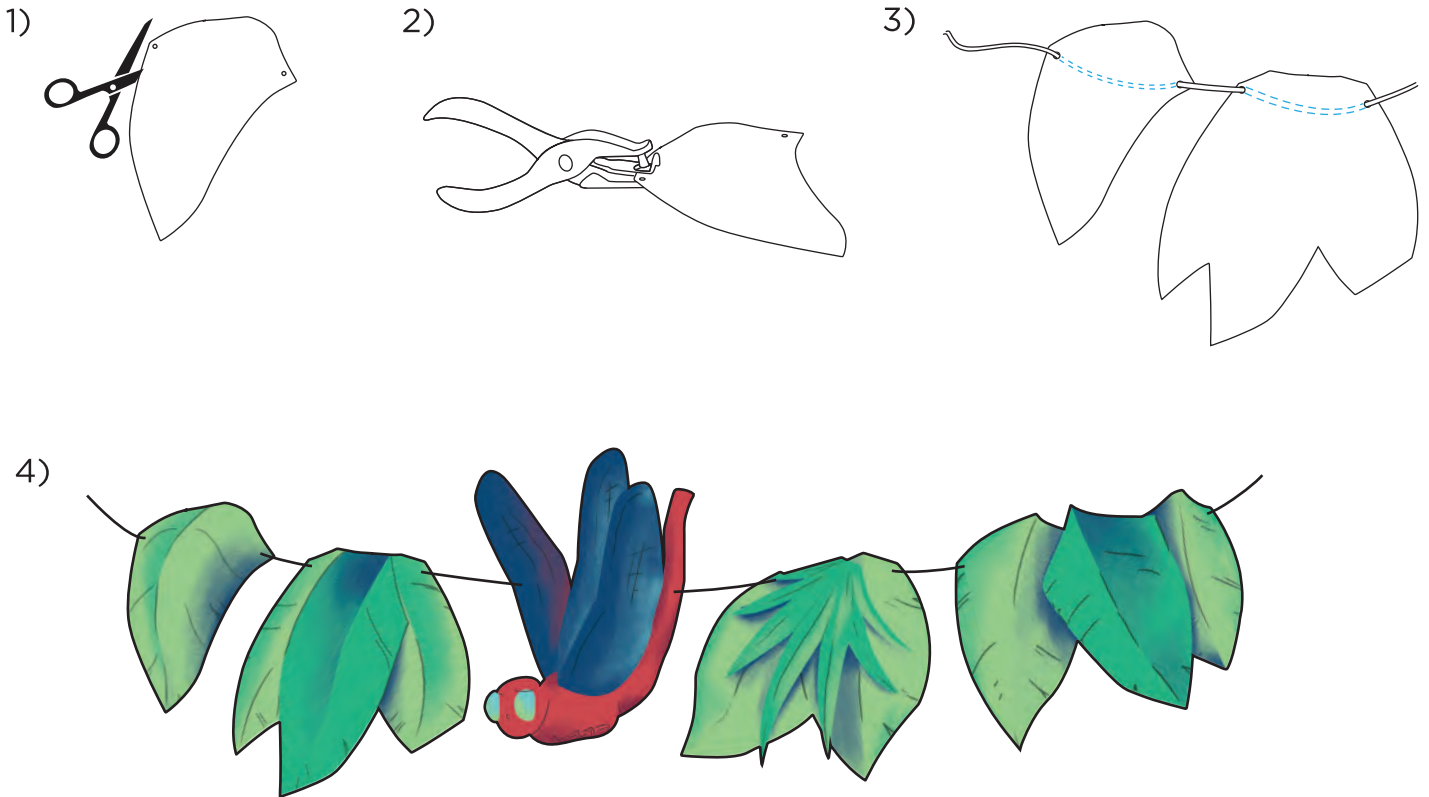
The imaginative mythological creatures that our ancestors dreamt up may have been inspired by ancient fossils. The Ancient Greeks believed in griffins—mythological creatures with the bodies of lions but the beaks and wings of eagles—but it is believed that these Greek stories were inspired by fossils from Protoceratops dinosaurs, who had four legs and a beak with elongated shoulder blades that may have been interpreted as wings.

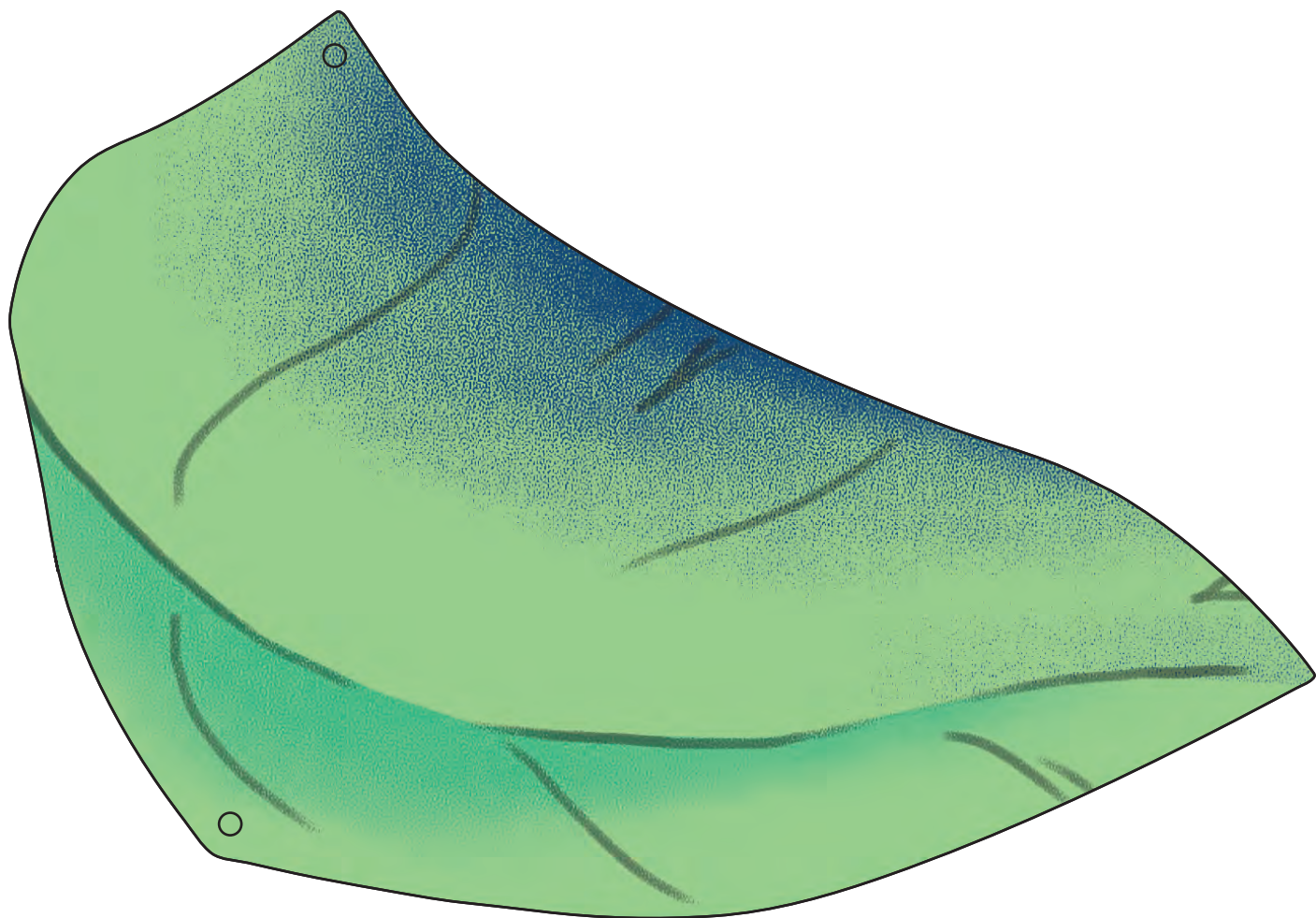
NAME _____

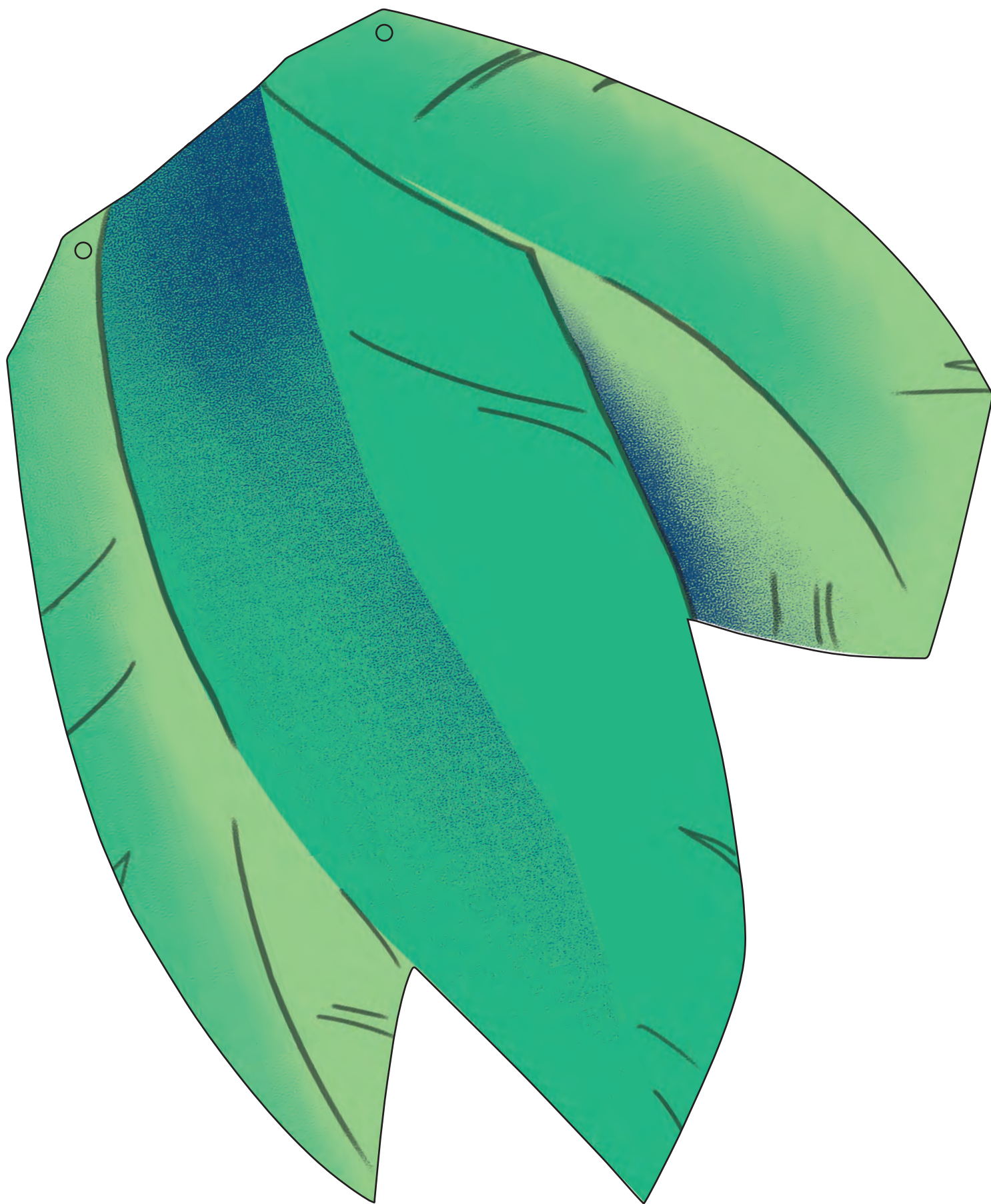
- WHAT YOU NEED:
- scissors
 - string or twine
(5-7 feet, depending on leaf spacing)
 - non-toxic glue or tape
(a glue stick or other quick-drying glue is best)
 - hole punch
(1/8" hole punch recommended but standard 1/4 inch works too)

HOW TO ASSEMBLE BUNTING:

Cut out the bunting components along the black lines. Use a hole punch to punch two holes where indicated (see image 2). Thread a length of **string** through each hole, making sure the **string** is behind the printed side (see image 3). If the leaves are sliding around on the string, tie a knot to keep the pieces from shifting. Move down the string, attaching components 1-2 inches from each other.



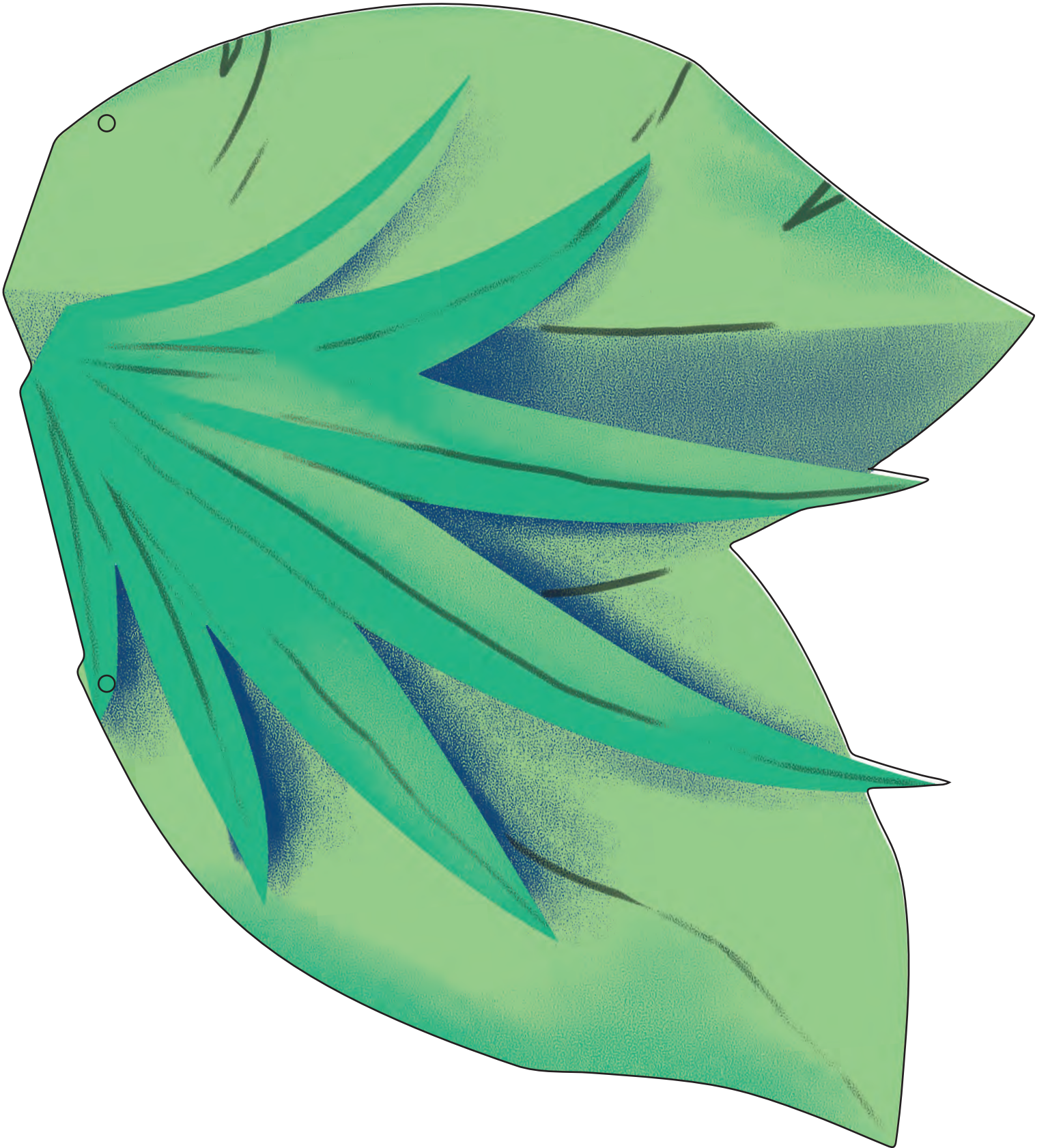


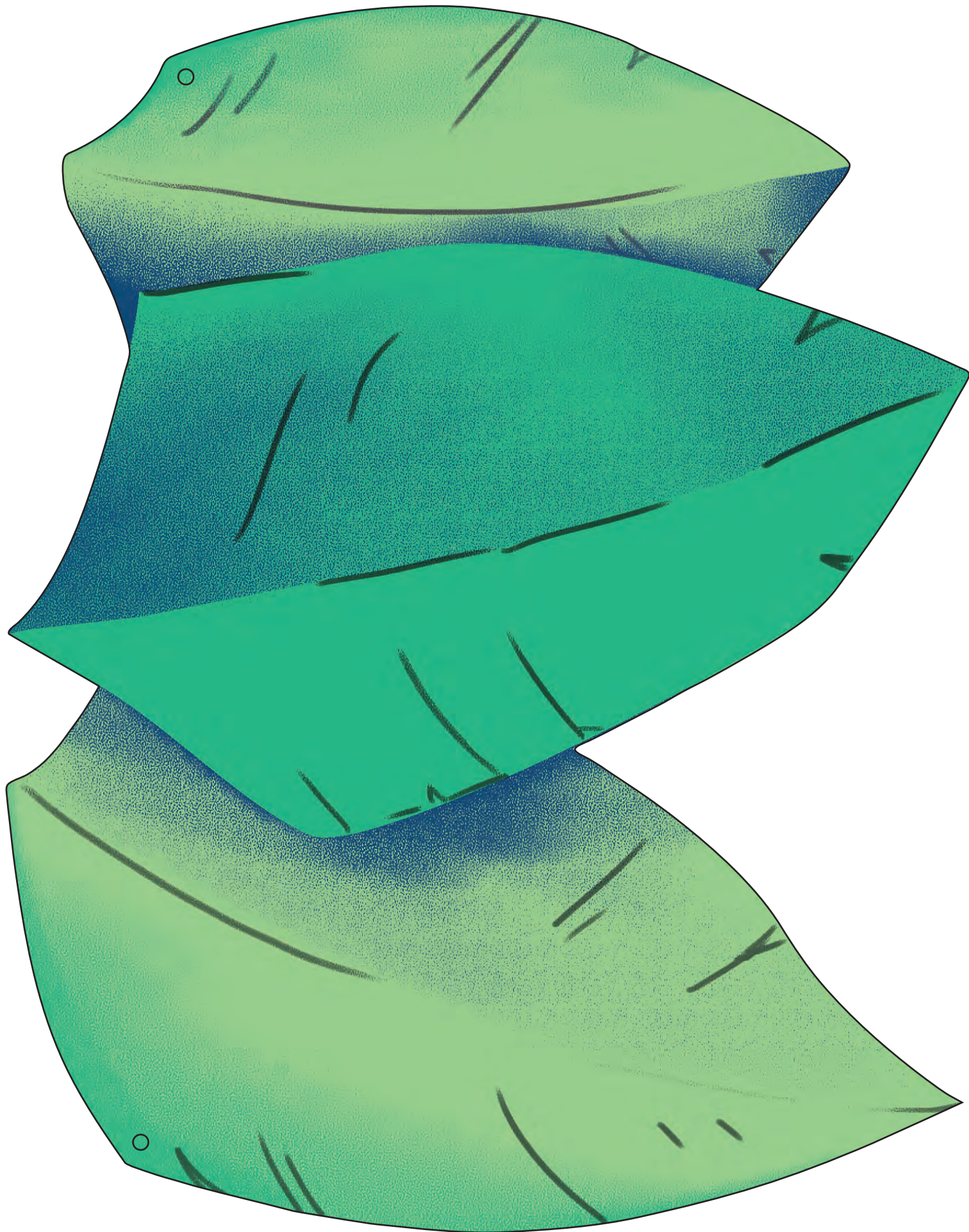




Attack of the Killer Dragonflies

Modern-day dragonflies may only have wingspans of up to 5 inches, but their prehistoric ancestors had wingspans of up to 2 feet long! Some scientists think higher oxygen levels in the earth's Paleozoic atmosphere caused them to grow to their giant sizes.



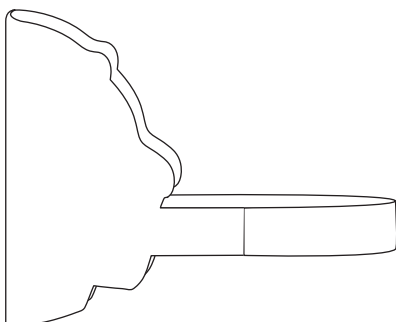
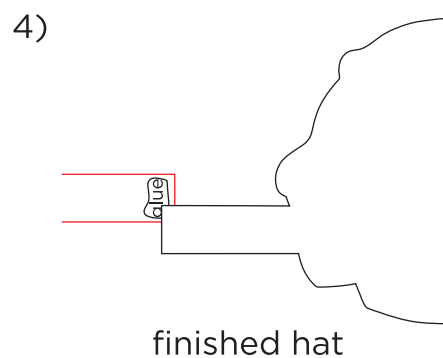
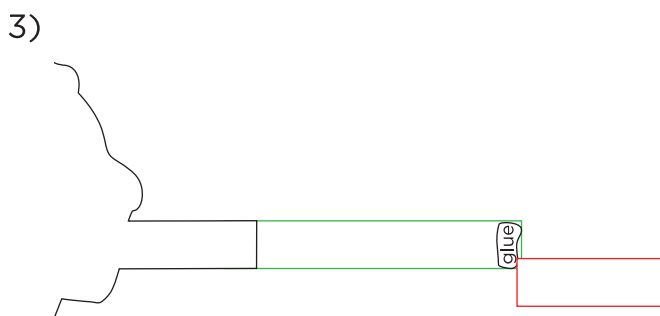
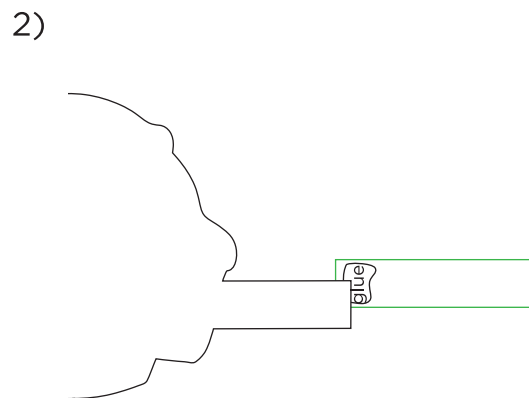
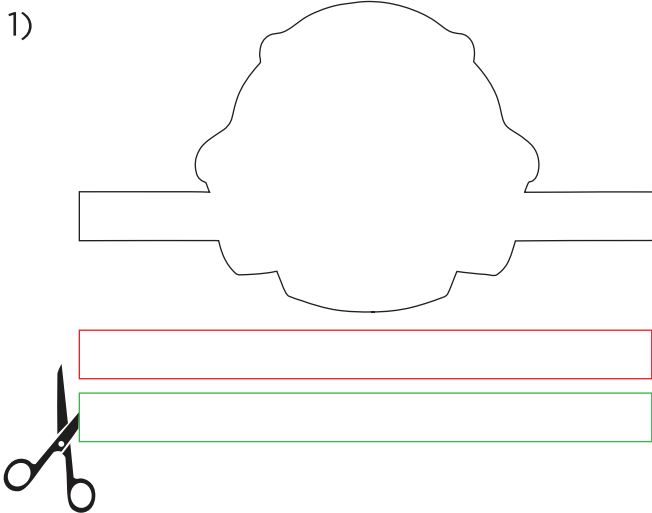


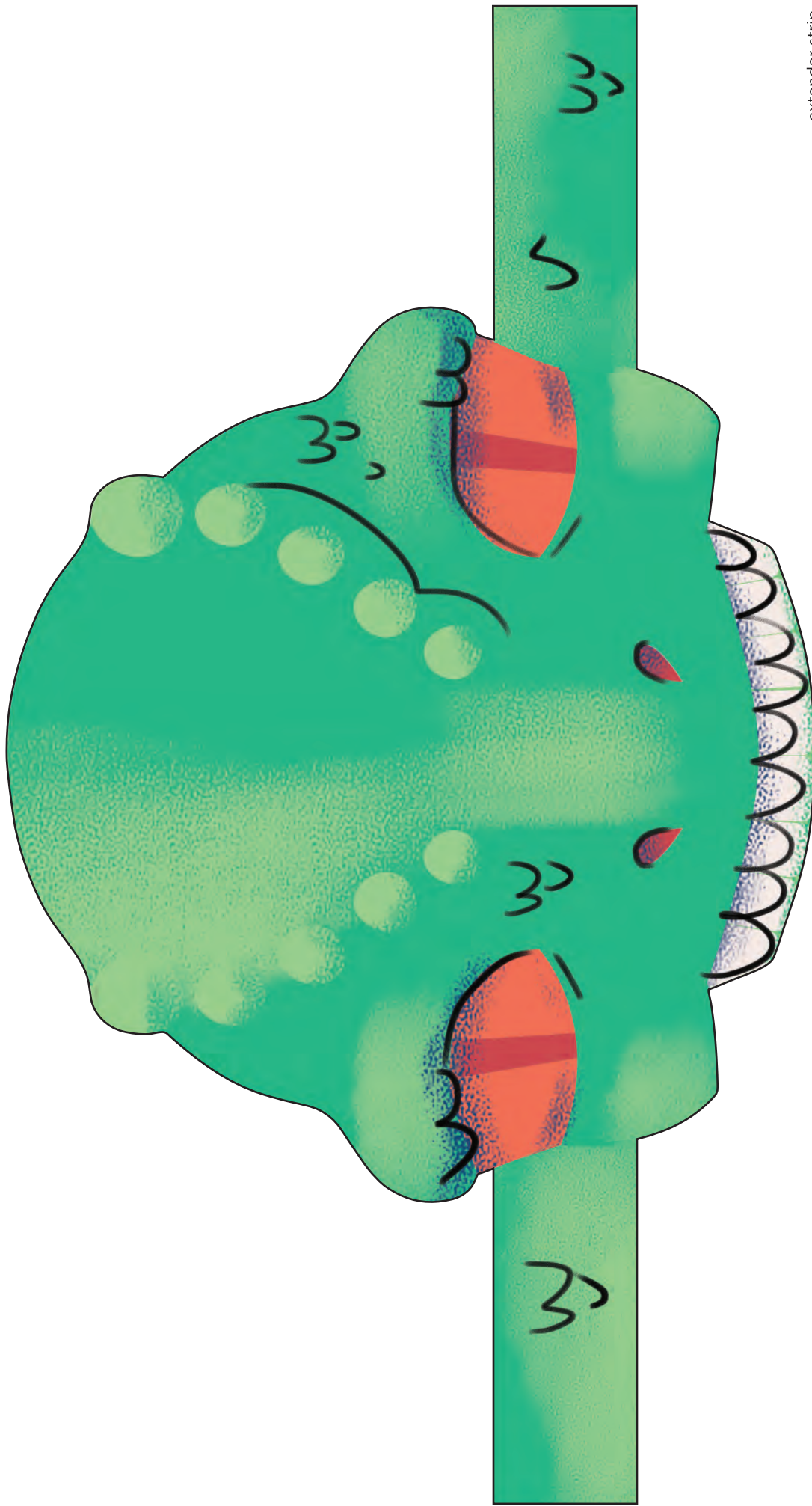
WHAT YOU NEED:

- scissors
- non-toxic glue or tape
(a glue stick or other quick-drying glue is best)

HOW TO ASSEMBLE PARTY HATS:

Cut out the hat components on the black lines. Apply glue to the end of the **fact strip** and attach to the back of the hat (see image 2). Apply glue to the other end of the **fact strip** and attach to the **extender strip** (see image 3). If needed, trim the **extender strip** to the appropriate length. Close the loop by gluing the end of the **extender strip** to the back of the hat (see image 4).





extender strip



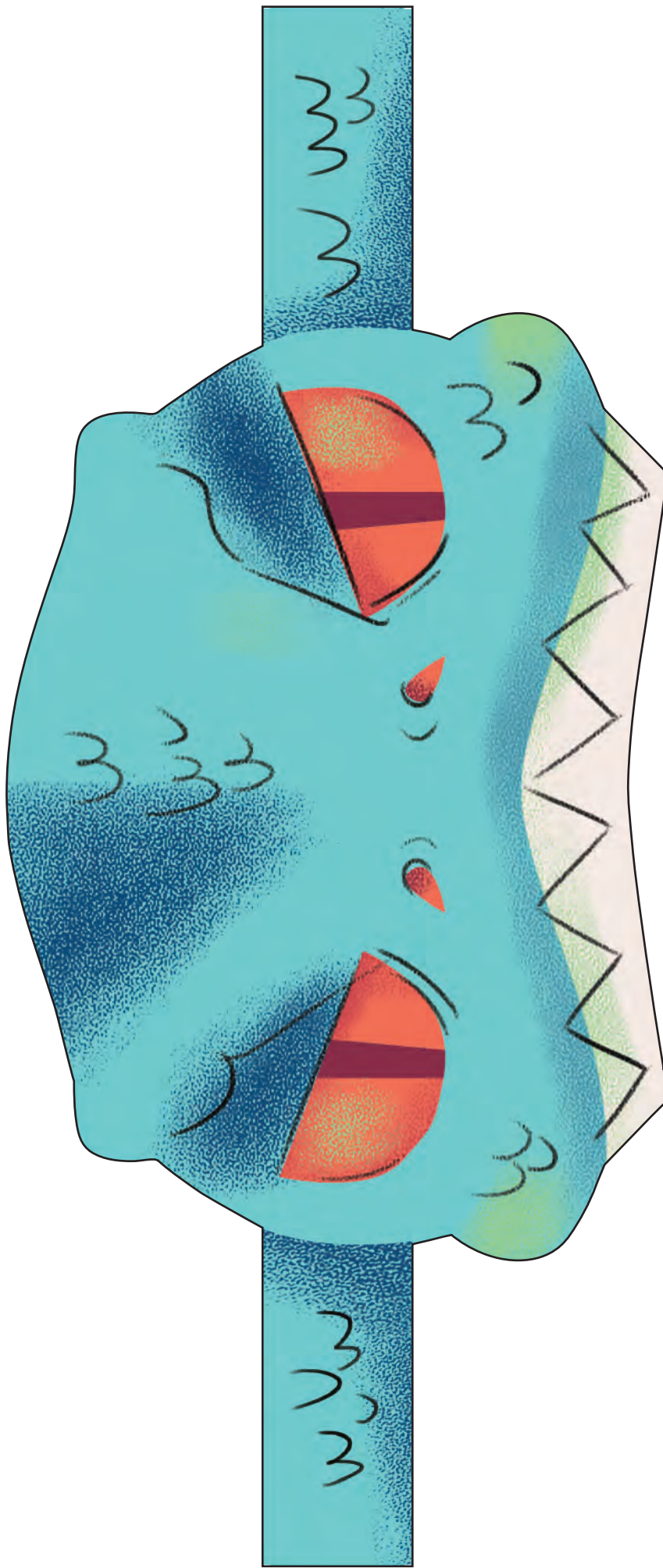
💡 Helmet or Head?

The Pachycephalosaurus had a skull roof up to 10 inches thick. By comparison, humans have a skull thickness between 6.5 and 7.1 millimeters. Scientists believe these dinos fought by butting heads or slamming their heads against rivals' bodies—a little added skull comes in handy for that.

glue

glue


fact tab



extender strip



glue

 **Helmet or Head?**

The Pachycephalosaurus had a skull roof up to 10 inches thick. By comparison, humans have a skull thickness between 6.5 and 7.1 millimeters. Scientists believe these dino fought by butting heads or slamming their heads against rivals' bodies—a little added skull comes in handy for that.

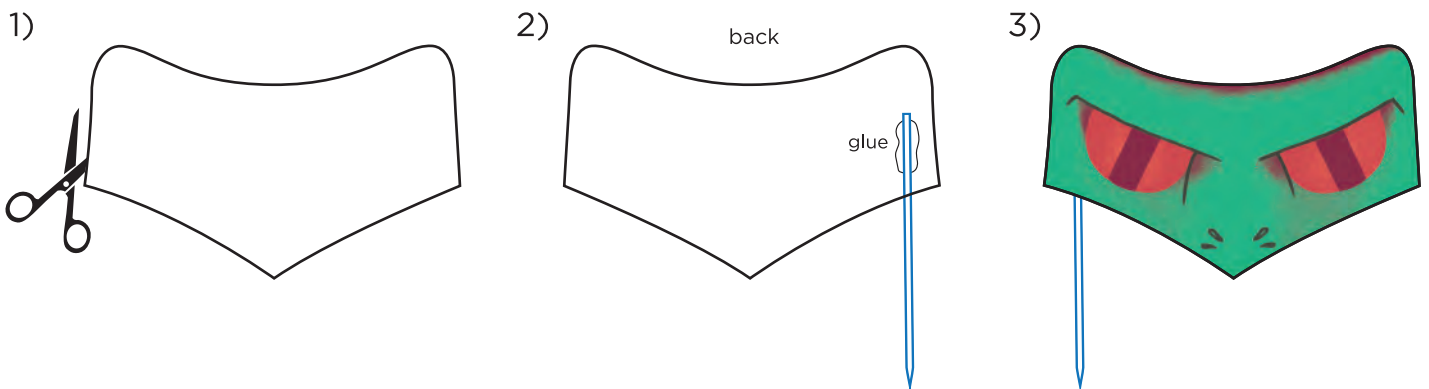
glue

fact tab

- WHAT YOU NEED:
- scissors
 - large wooden skewers (or other wooden sticks such as popsicle sticks)
 - non-toxic glue or tape
(a glue stick or quick-drying glue is recommended)

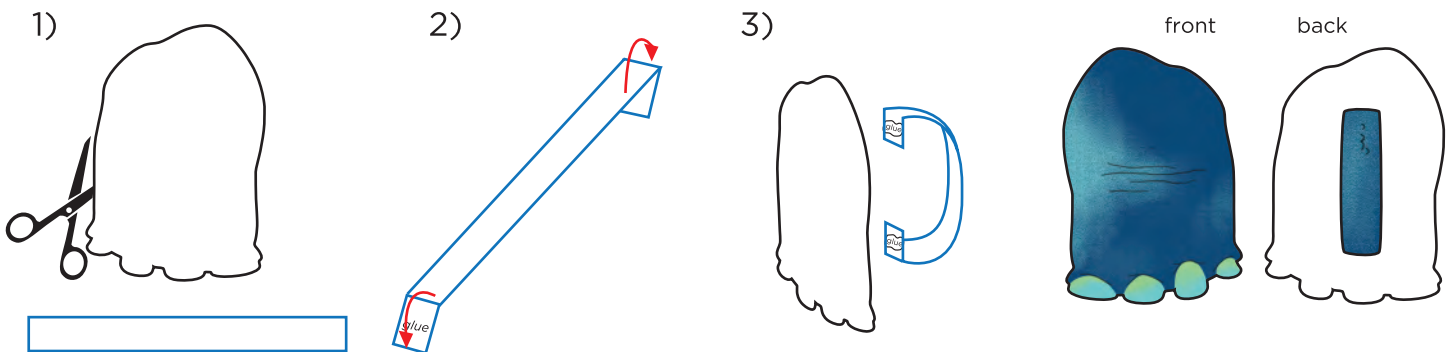
HOW TO ASSEMBLE PHOTOBOOTH PROPS:

Cut out each photobooth prop along the black lines. Apply glue to the back of the printed prop and adhere the wooden **skewer** (see image 2). Be sure to attach the **skewer** at a stable point on the prop so that it is secure but out of the way when in use. Repeat for each prop. For props with a Mental Floss fact, apply glue to the back of the fact tab and secure it to the back of the prop.



HOW TO ASSEMBLE DINOSAUR FEET AND CLAWS:

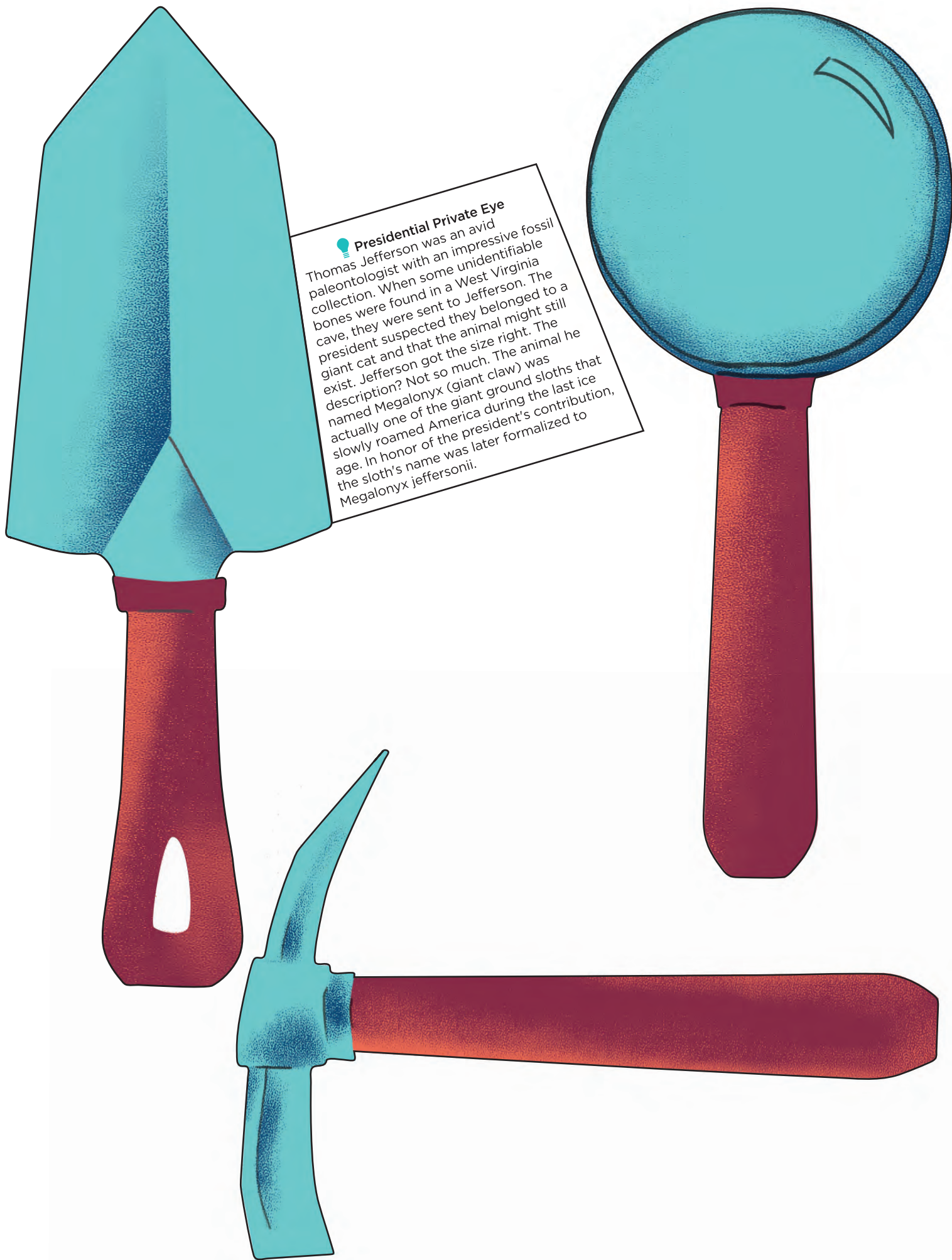
Cut out the components on the black line. Fold the **strip** back (away from the printed side) along the fold lines and apply glue to each end (see image 2). Attach glued ends to the back of the foot (see image 3). Be sure to center the **strip** so that the printed side faces out and the **strip** forms a handle. Take a handle in each hand and pretend you are a dinosaur!

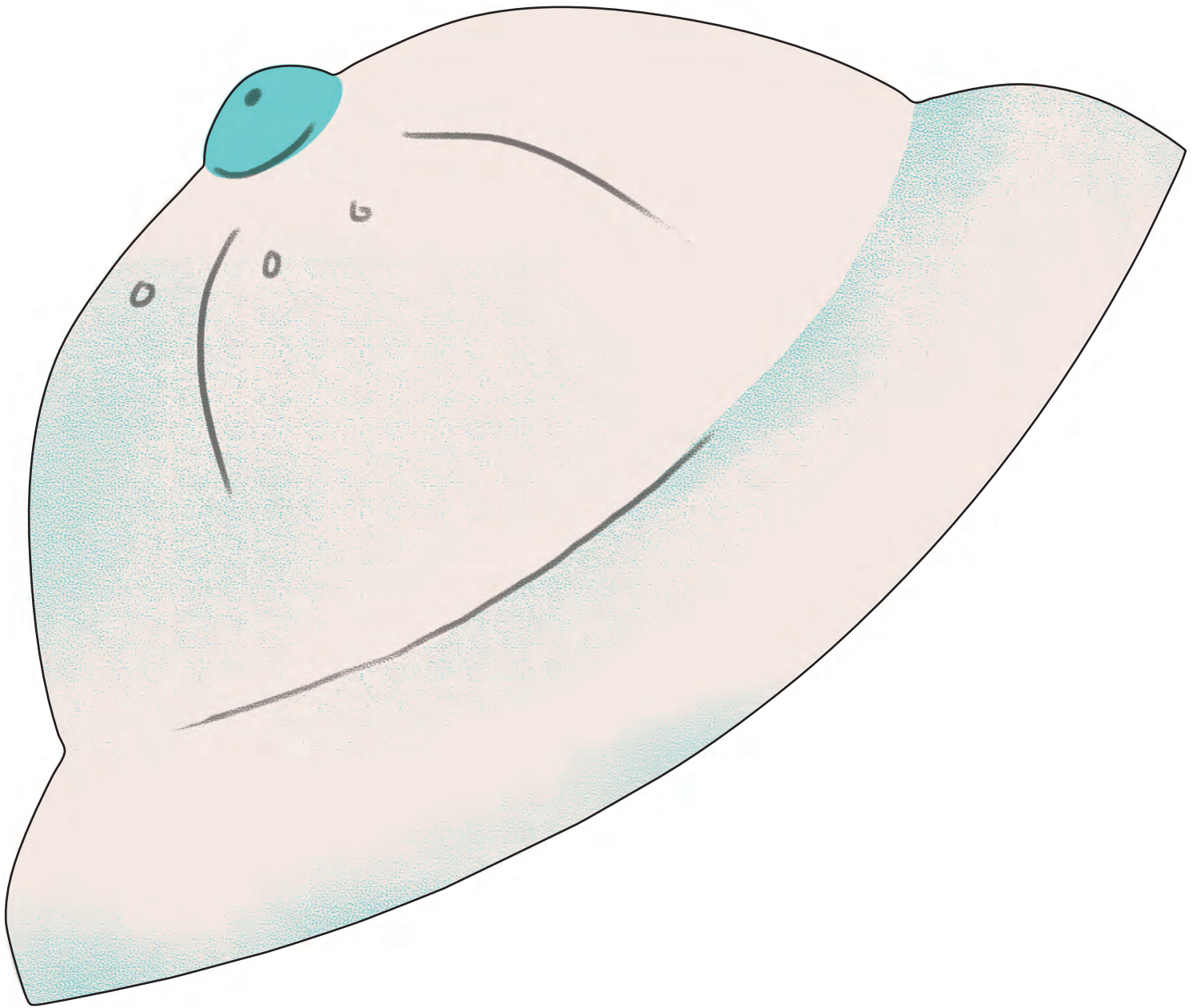
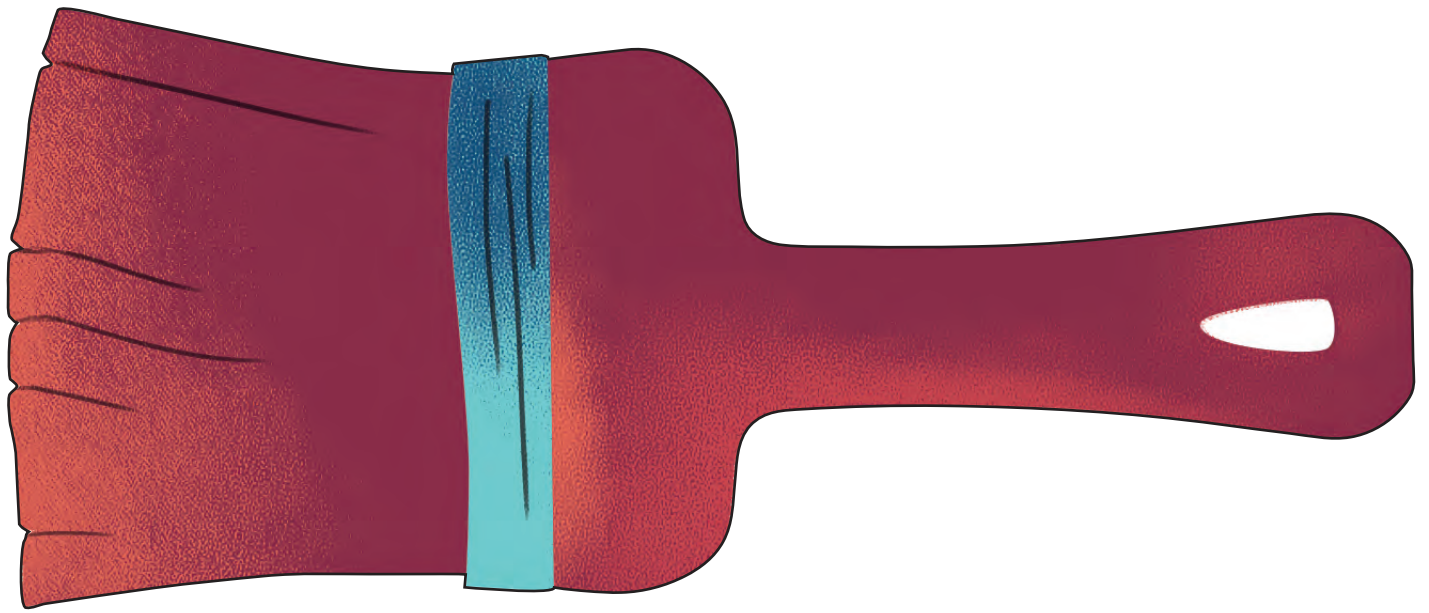


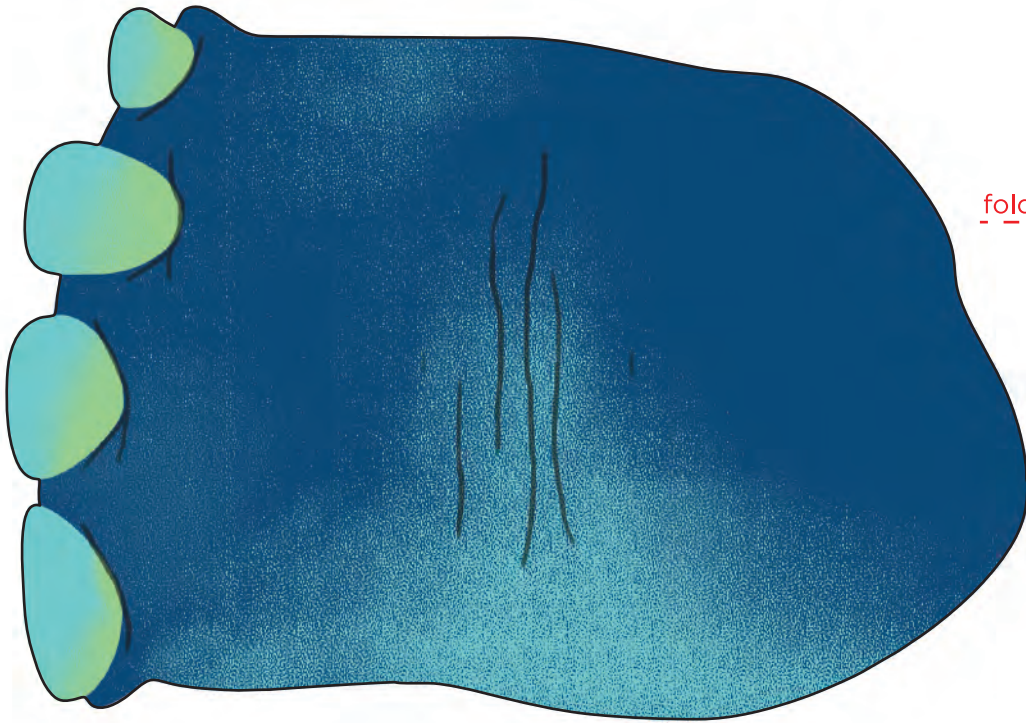


Presidential Private Eye

Thomas Jefferson was an avid paleontologist with an impressive fossil collection. When some unidentifiable bones were found in a West Virginia cave, they were sent to Jefferson. The president suspected they belonged to a giant cat and that the animal might still exist. Jefferson got the size right. The description? Not so much. The animal he named *Megalonyx* (giant claw) was actually one of the giant ground sloths that slowly roamed America during the last ice age. In honor of the president's contribution, the sloth's name was later formalized to *Megalonyx jeffersonii*.



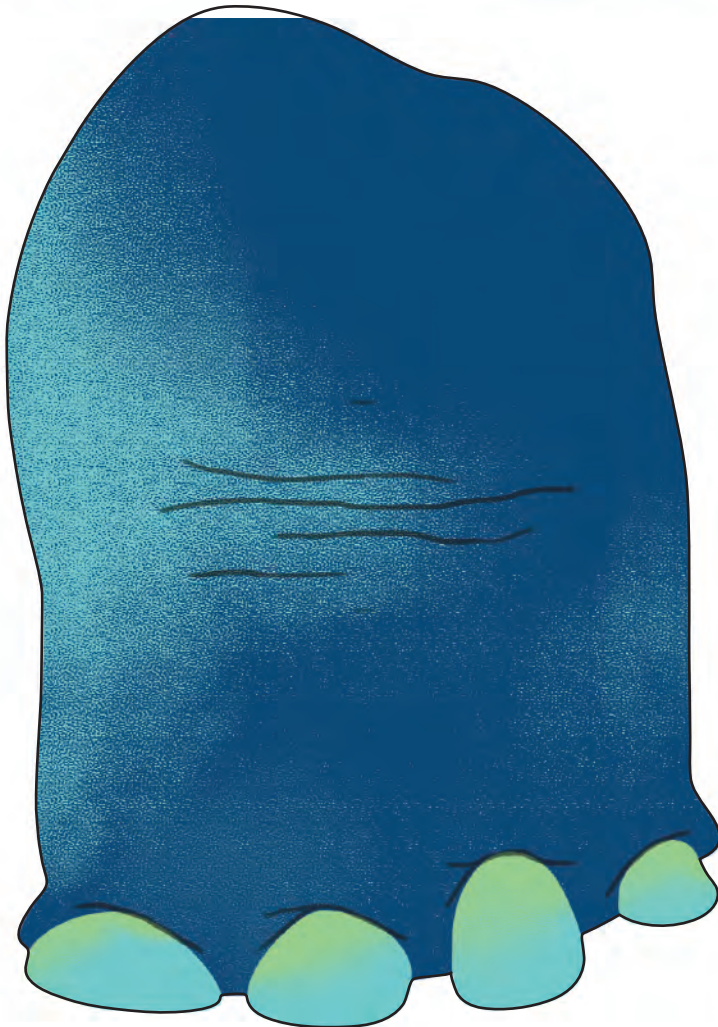




fold

glue

glue

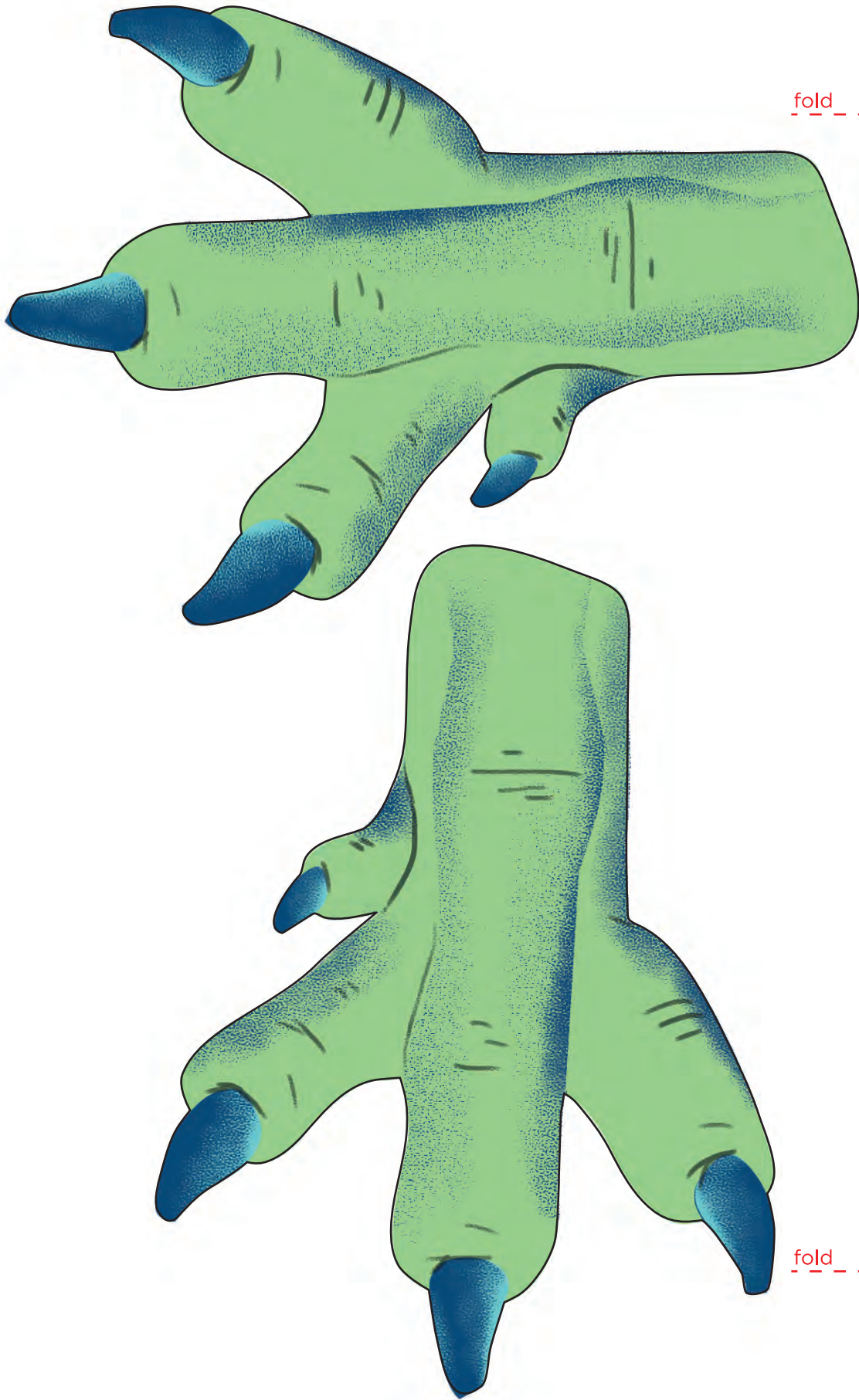


fold

glue

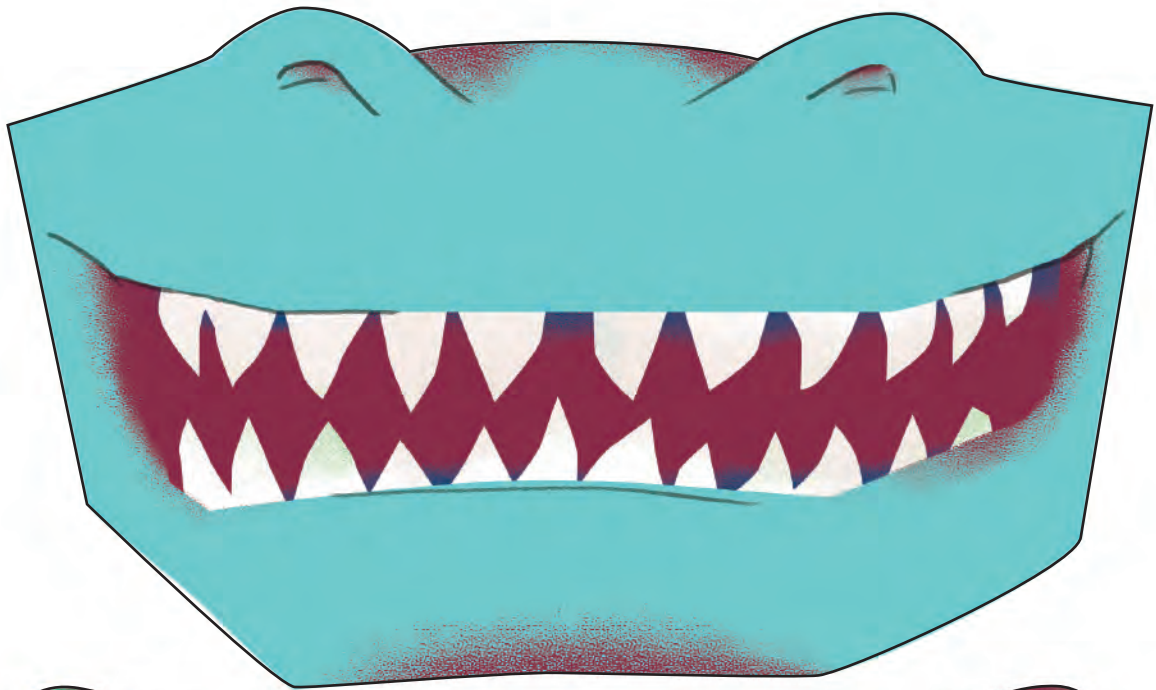
glue





It's All Relative
It might look like the T. Rex had tiny arms in modern-day depictions, especially compared to its huge body, but the T. Rex stood about 18 feet tall which means its arms were around 3 feet long.





The Race Against Extinction

BEFORE THE PARTY:

Blow up several “dinosaur eggs” (or balloons). You may want to have extras in case some of the balloons pop during the relay race. Designate a starting line and a finish line.

HOW TO PLAY:

1. Split all players into two teams. Have each team line up.
2. The first player on each team will place a balloon between their knees.
3. When the referee says “Go!”, the first person from each team will try to get from the starting line, to the finish line, and back to the starting line without letting the balloon fall. Players can waddle, hop, jump, or run like a velociraptor to get to the finish line, but they may not use their hands or arms to touch the balloon. (If the balloon drops to the ground, they can either pick up the balloon and carry on from where they lost it, or they have to go back to the start and try again. Just make sure you establish the rules before the game and that everyone knows what they are!)
4. Once the first player has made a full round and arrived back at the starting line, they will pass the balloon on to the second player. Repeat for each team member until everyone has had a turn. The fastest team to finish wins the race against extinction!

Pin the North America

WHAT YOU NEED: - scissors
 - tape

HOW TO ASSEMBLE:

Trim off excess paper around the game board. Match up the details of the map and tape the four pieces together. Tape on a vertical surface, such as a wall. Cut out a North America piece for each player and apply tape to the blank side.

HOW TO PLAY:

1. Blindfold one player.
2. Spin the blindfolded player in circles for a few seconds until they get a bit dizzy and lose their sense of direction.
3. Have the blindfolded player walk forward towards the game board and try to pin their North America on the correct spot on Pangea.
4. Remove the player’s blindfold so they can see how close they got.
5. Repeat for all players.
6. The player who placed their North America closest to the correct spot wins the game!



A stylized illustration of the supercontinent Pangea. The landmasses are depicted in a light green color, while the surrounding oceans are a deep teal. A thick, dark red banner with a folded end is positioned across the top left, featuring the word 'PANGAEA' in white, bold, sans-serif capital letters. In the top right corner, a sunburst or starburst graphic is rendered in a dark red color. The overall style is graphic and educational.

PANGAEA

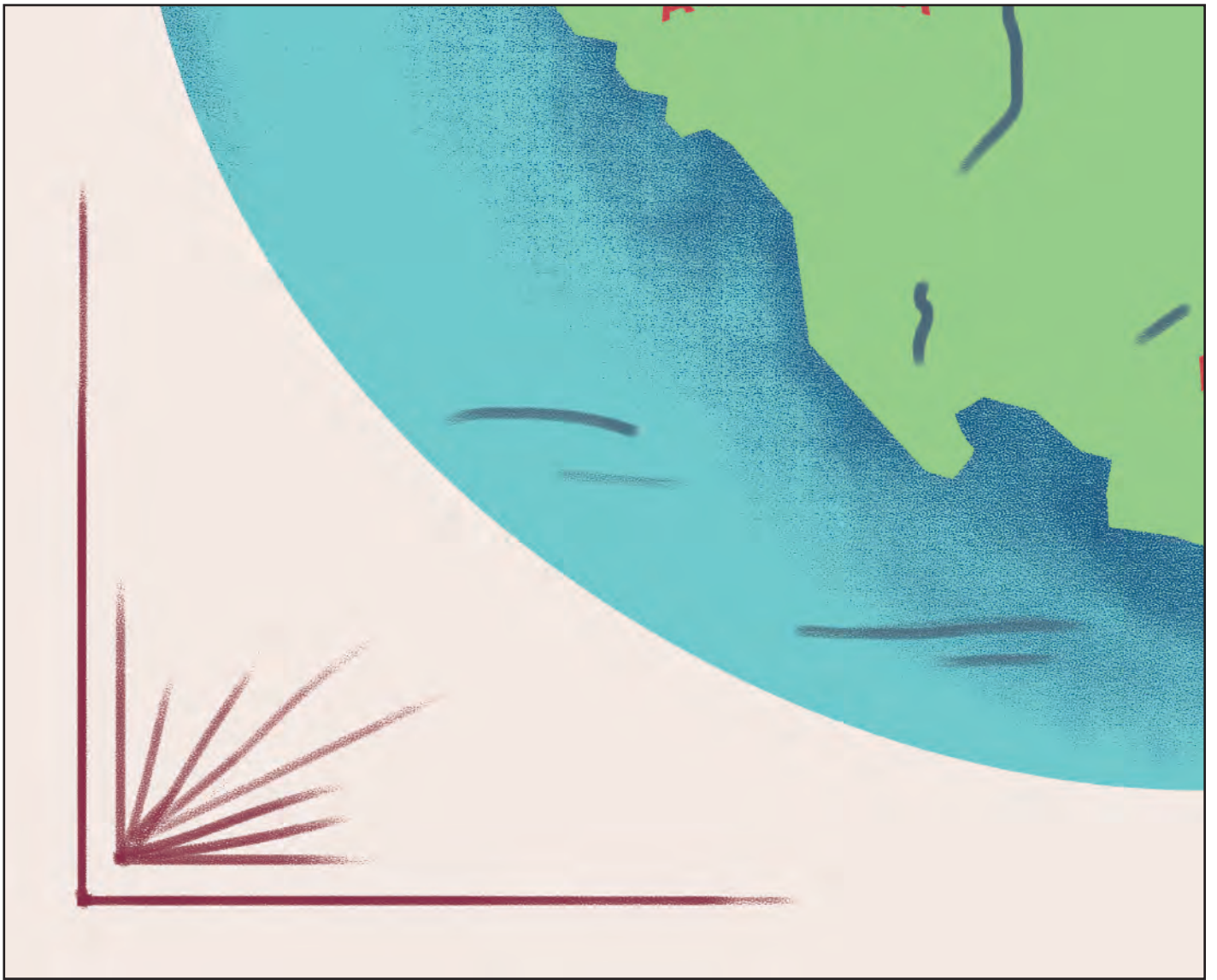
EURASIA

AFRICA



Continental Breakup

Alfred Wegener developed the theory of continental drift and the supercontinent of “Pangea” in 1912. At the time, most geologists thought he was a kook, but it turns out many of his ideas were roughly correct. If you were to superimpose today’s continents onto a map of Pangea, Antarctica would be nestled between Africa and Australia!



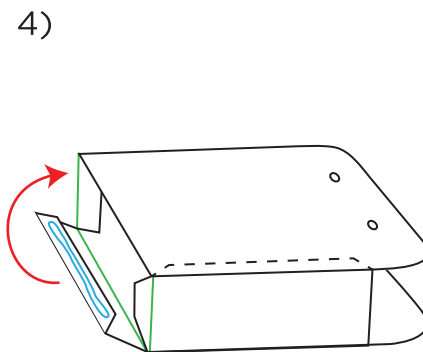
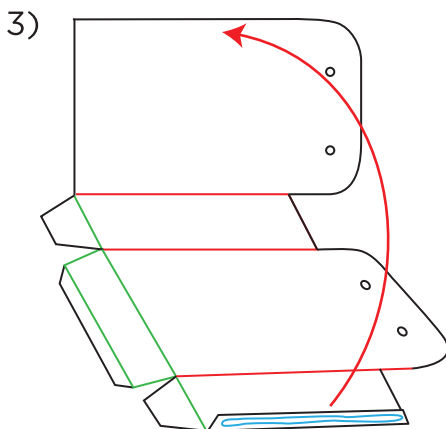
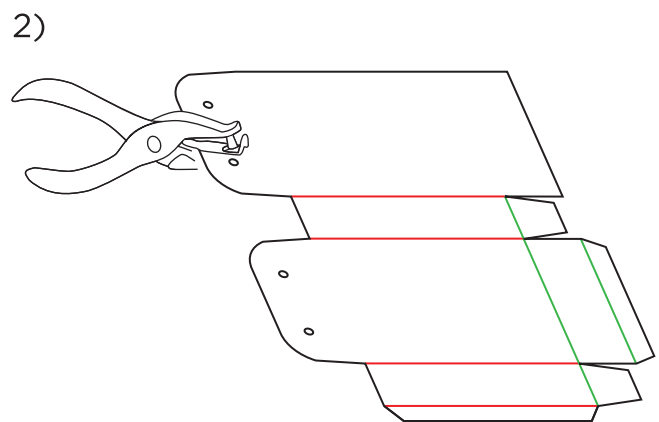
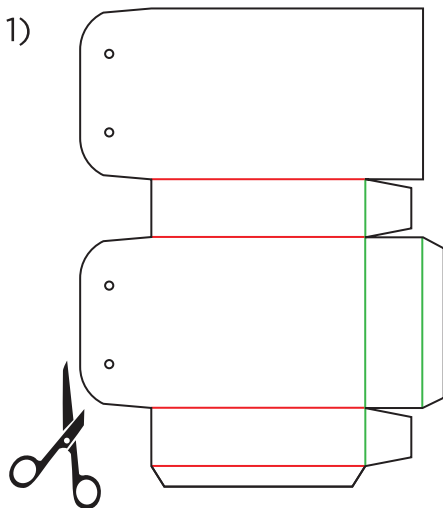


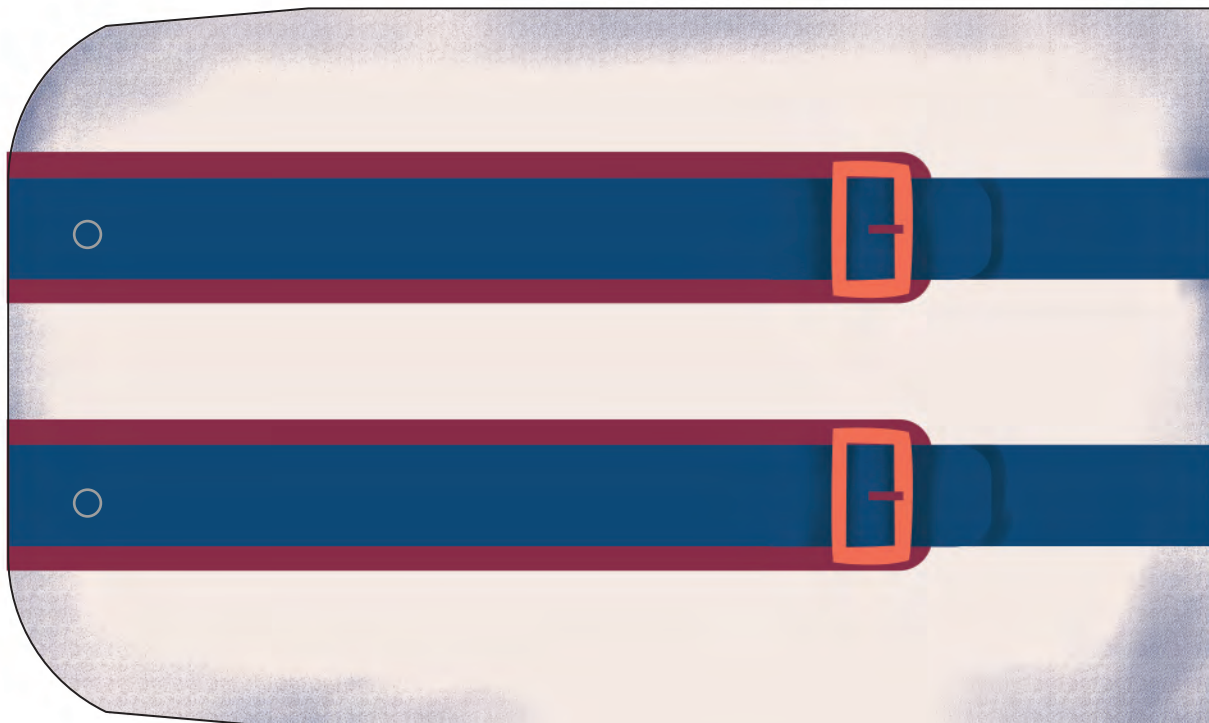


- WHAT YOU NEED:
- scissors
 - string or twine
 - non-toxic glue or tape
(a glue stick or quick-drying glue is recommended)

HOW TO ASSEMBLE TREATBAGS:

Cut out the treat bag on the black line. Use a hole punch to create the holes in the top flaps (see image 2) . Fold along the **horizontal** fold lines and **glue** panel 1 to the inside of the box (see image 3). (For a cleaner fold, you can use a utility knife to score the paper along the fold lines first. Be careful not to cut all the way through the paper.) Fold in the tabs along the **vertical** fold lines and apply **glue** to panel 2. Then fold in the base of the box, securing panel 2 inside the box (see image 4). Thread string through the holes in the box and tie a bow (see image 5).

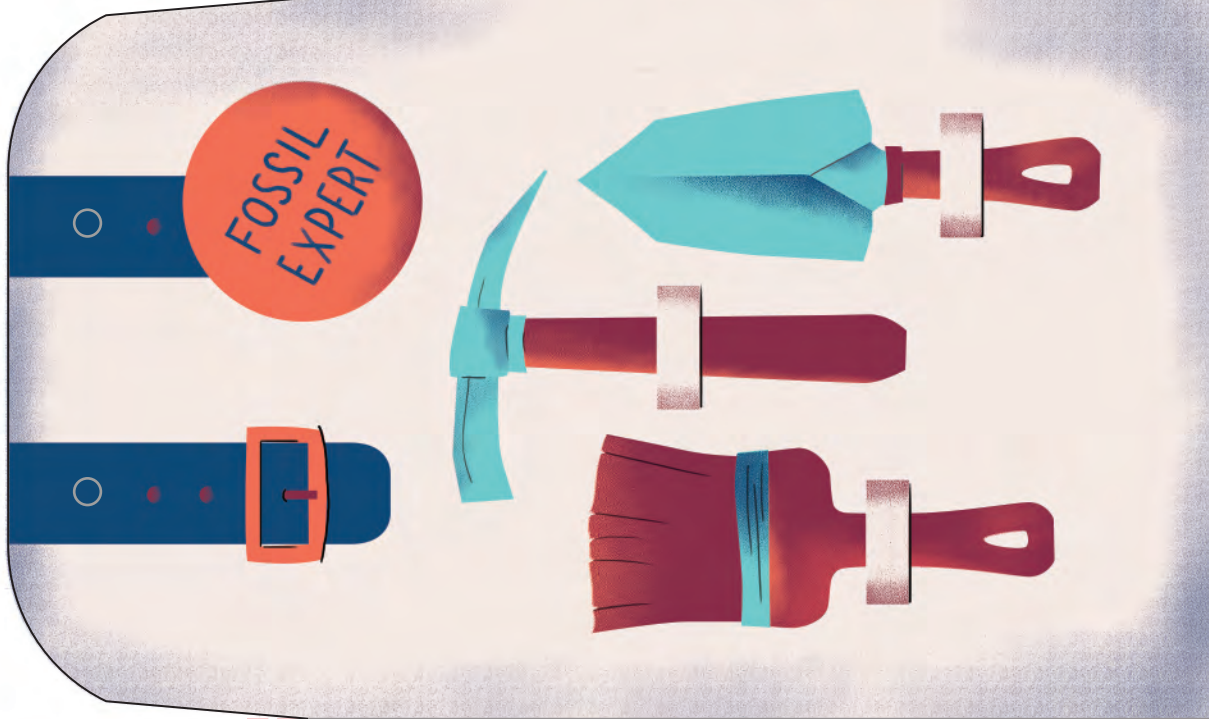




fold

fold

fold



fold

fold

panel 1

fold

The Great Dinosaur Rush

Othniel Charles Marsh and Edward Drinker Cope were both American paleontologists with an infamous rivalry that led to a period of intense competition for fossil-finding. Although Marsh and Cope were financially and socially ruined by the end of the Bone Wars, they made huge contributions to the field of paleontology.

fold

fold

panel 2

WHAT YOU NEED:

- pens and pencils
- ink pad or markers

HOW TO USE GUESTBOOK PAGES:

Print out one fossil record page. Fill in the date and location of your celebration at the top of the page. Have each guest fill in their name on the lines to find out their dinosaur name. For example, “Katie” will become “Katie-adon”. Using a stamp pad, have each guest leave behind their fossil imprint (their fingerprint) in the white box next to their name. Keep the guestbook page as a memento until the end of time!

DATE OF EXCAVATION: _____

LOCATION: _____

FOSSILS FOUND:

NAME:

_____ -mimus
(imitator)

NAME:

_____ -raptor
(thief)

NAME:

_____ -adon
(tooth)

NAME:

_____ -saurus
(lizard)

NAME:

_____ -ceratops
(horned head)

NAME:

_____ -ped
(feet)

NAME:

_____ -gnathus
(jaw)

NAME:

_____ -venator
(hunter)

Fabulously Named Fossils

Sometimes paleontologists like to get creative when naming new dinosaurs. Bambiraptor feinbergi is a 75-million-year-old theropod dinosaur that was named after the Disney deer Bambi. Why? Because it is small – less than one meter long.

